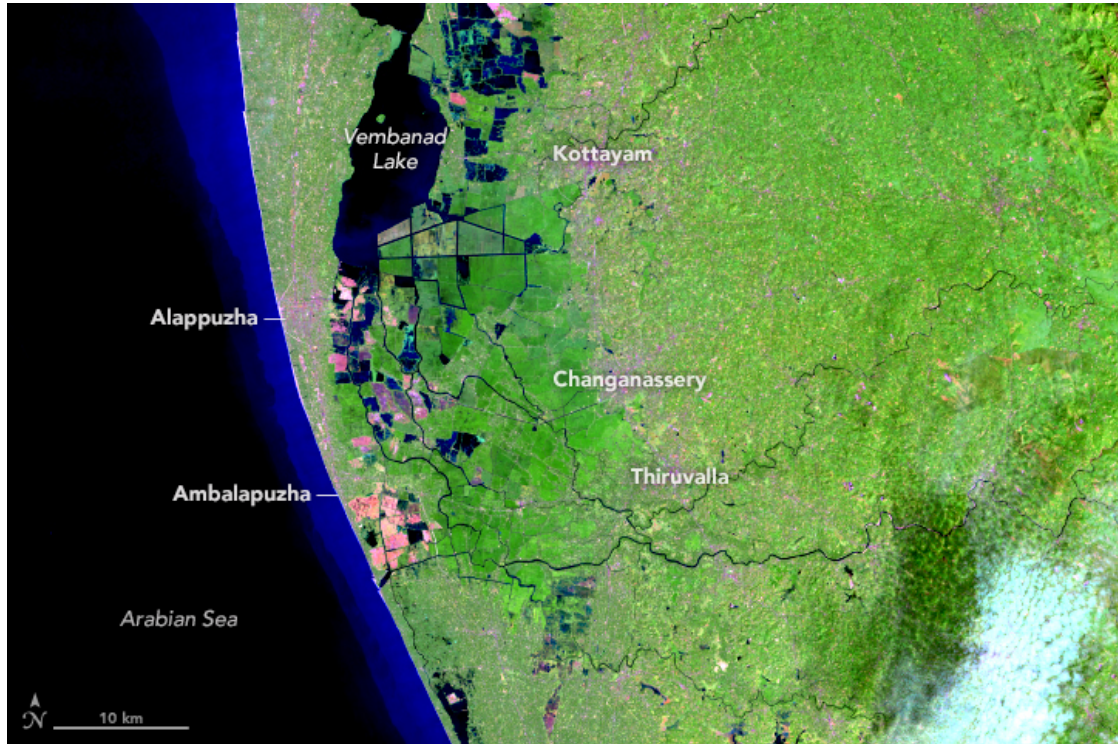
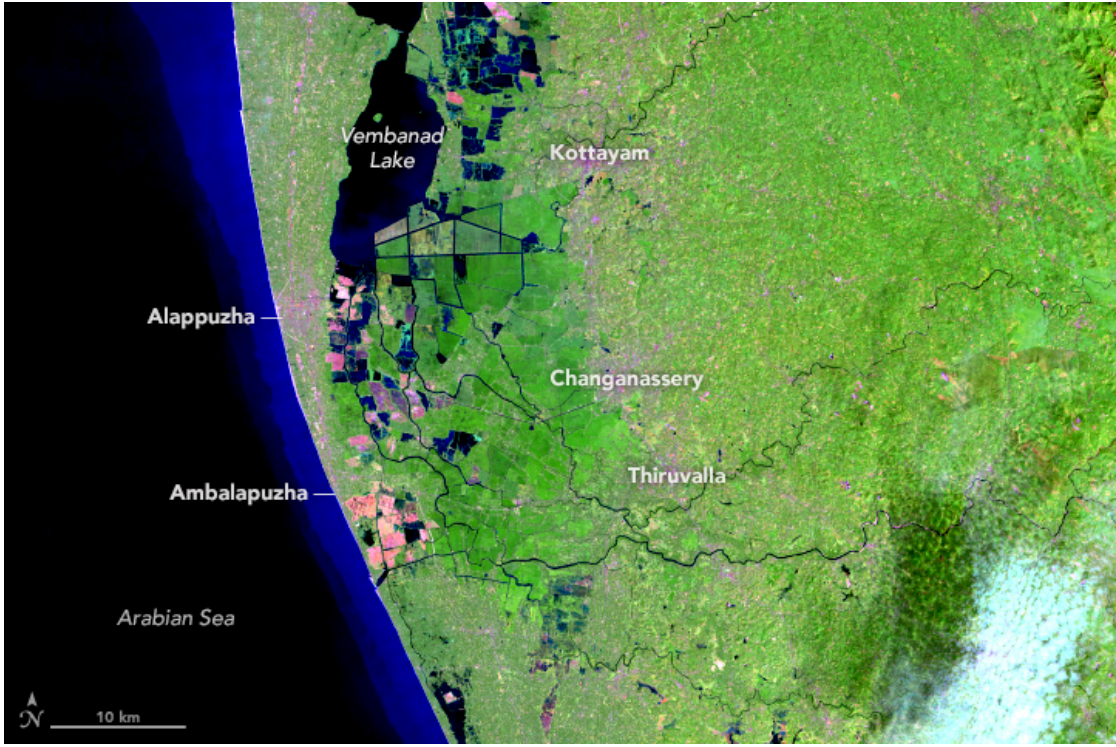
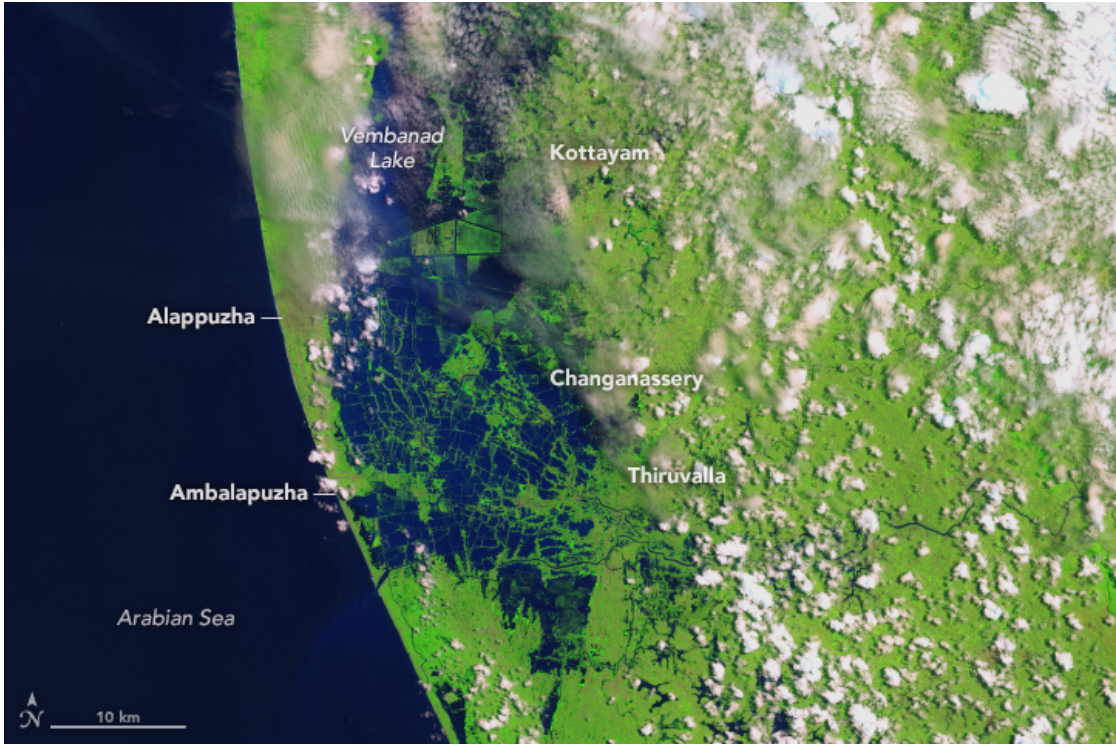


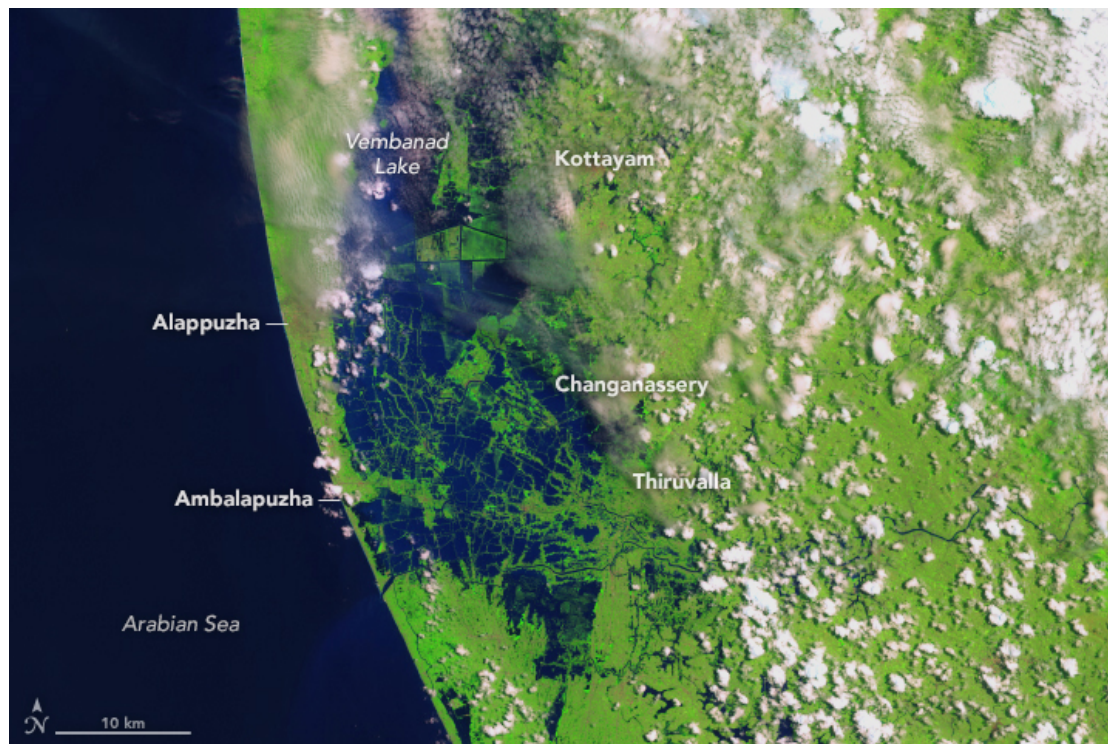
earthobservatory.nasa.gov

Before and After the Kerala Floods

2-3 minutes







Residents in India's state of Kerala are reeling from a [“once-in-a-century”](#) flood that displaced nearly a million people, caused hundreds of fatalities, and washed away homes. The region started receiving heavy rain on August 8, 2018.

The Operational Land Imager (OLI) on the [Landsat 8](#) satellite acquired the left image ([bands 6-5-3](#)) on February 6, 2018, before the flood. The Multispectral Instrument on the European Space Agency's [Sentinel-2](#) satellite acquired the right image (bands 11-8-3) on August 22, 2018, after flood water had inundated the area. The images are [false-color](#), which makes flood water appear dark blue. Vegetation is bright green.

Several rivers throughout the region spilled over their banks. Water from the Karuvannur River ran through 40 villages, and [washed away](#) a 2.2 kilometer (1.4 mile) stretch of land connecting two national highways. Elevated water levels along the Periyar River [displaced thousands of people](#).

The Kochi airport remains closed due to flooding inside the

airport. Water levels in reservoirs and precipitation have subsided, and the Indian Meteorological Department has withdrawn the Red Alert from all 14 districts.

NASA Earth Observatory images by Lauren Dauphin, using modified Copernicus Sentinel data (2018) processed by the European Space Agency and Landsat data from the [U.S. Geological Survey](#). Story by Kasha Patel.